



**2023-2024**

**BIBLE QUIZZING COMPETITION**

**Handbook**

*abcsedu.com*

*Director Holly Williams: [hwilliams@sbbcwv.com](mailto:hwilliams@sbbcwv.com)*

*Administrator Rachel Horton: [rhorton@sbbcwv.com](mailto:rhorton@sbbcwv.com)*

# Timeline of Due Dates Bible Quizzing

- **December 1, 2023**–Bible Quiz Team Rosters Due
- **December 1, 2023**– Bible Quiz Fee due (\$5.00 per team member, including alternates).
- **January 9, 2024**– Bible Quiz competition lunch orders selected and paid.
- **February 1, 2024**– Bible Quiz Team tournament at MCA. (1 team per age bracket per school).

## LOCATION

Shenandoah Bible Baptist Church  
2251 Williamsport Pike  
Martinsburg WV 25404

## DRESS CODE

### *PERSONAL APPEARANCE (MALE)*

#### **HAIR:**

Male contestants must have standard, conservative haircuts. The hair is to be off the collar. It is to be above the ears, with sideburns no longer than the middle of the ear. Male sponsors and guests may wear neatly trimmed facial hair. Sponsor schools should review the students they are bringing to ensure compliance.

#### **ATTIRE:**

Male contestants must wear dress shirt, tie, and long trousers at all times. A solid color polo with dress trousers is also acceptable. School logos are acceptable on polos. There are to be no pull-on or pull-over shirts that are not polo style. Also, there will be no blue jeans, denim-type trousers, denim jackets, or casual trousers with patch pockets. No tennis shoes are allowed.

#### **PLATFORM COMPETITION:**

A suit or slacks and a dress shirt (tucked in), and a tie will be worn. A

jacket is not required. No blue jeans are allowed. Shoes should be dress shoes and should be shined. Dignity and good grooming should be apparent. Clothing should be clean and neatly pressed. Uniformity of dress is recommended for groups.

#### *PERSONAL APPEARANCE (FEMALE)*

##### **ATTIRE:**

An image of Christian discretion and modesty is to be portrayed. Girls must wear dresses or skirts which are no shorter than the middle of the knee. (The hem of the skirt should touch the floor when the girl is in a kneeling position.) Necklines should not be lower than three finger-widths below the clavicle. T-shirts, sleeveless, sheer blouses, form-fitting dresses or skirts, or skirts with slits which extend above the knee are prohibited. Shirts or blouses with writing are not allowed. Ankle-socks, knee-socks, or tights should be always worn. Flip flops, clogs, open-backed shoes without a strap, and tennis shoes may not be worn. Excessive make-up is not to be worn. Jewelry must be conservative and minimal. Only simple earrings that are not excessively long are allowed.

### **FINANCIAL INFORMATION**

In order to be an active part of ABCS each school is required to pay \$5.00 for each student enrolled in their school. Checks can be made out to Independent Baptist Church. Please write ABCS fees on the memo line of the check. On the envelope, please mark Attention: Bro. Jim Stroud.

*Independent Baptist Church  
Atte: Bro. Jim Stroud  
PO Box 206  
Clinton, MD 20735*

Bible Quizzing has a *separate fee* of \$5.00 per student involved in any part of Bible Quizzing. Checks can be made out to Independent Baptist Church. Please write Bible Quizzing on the memo line of the check. On the envelope, please mark Attention: Bro. Jim Stroud. **This payment is due December 1<sup>st</sup>, 2023.**

Martinsburg Christian Academy can provide lunches for Quiz Teams and Coaches. **Lunch orders and payment are due by January 9<sup>th</sup>.** Orders and payments can be made by the link on [www.abcsedu.com/fine-arts](http://www.abcsedu.com/fine-arts).

### **WHAT TO DO WHEN YOU ARRIVE AT BIBLE QUIZZING:**

#### **Thursday – FEBRUARY 1**

1. Volunteers to judge the Bible Quizzing must be at the host school by 9:30 a.m. They will meet in the Smith Conference room on the second floor of the main building.
2. Bible Quiz teams will have a combined meeting at 9:45 a.m. in the Main Auditorium.
3. Quiz Teams and coaches will be dismissed and sent to specified locations after that meeting.

4. Lunches will be provided for judges and Quiz Master only. Students, coaches, and school staff not involved in judging must preorder and pay for their lunch by January 9<sup>th</sup>.

## **BIBLE QUIZ TEAM**

Bible quiz teams compete against each other in teams of four with two alternates. Only one team per division from each school is permitted. Schools are encouraged to have an in-house competition to determine which team participates in the ABCS Bible Quizzing Day. The contestants are given a passage to study. Contestants use a Bible drill electric buzzer system to determine who answers the question first.

This will be conducted Tournament Style, with double elimination with the exception of the championship games being single elimination. The brackets were created by a computer system and randomized to ensure no favoritism on the part of the Bible Quizzing Director or Administrator. The entire competition will be completed on Thursday.

### **A. Scoring:**

The first team to answer 10 questions correctly wins that match. There will be no deductions or bonuses given. (During the championship games the first team to answer 15 correct wins.)

### **B. Rules:**

1. Control of the quiz is in the hands of the quizmaster. He/she will have an assistant to keep score and time for the teams.
2. The teams will be notified of the score periodically. They may ask for the score after a question has been answered.
3. The questions will be written from the King James Version.
4. Each team may have up to 6 six members in total with two members as alternates.
5. Contestants may answer up to 5 questions correctly per match. Each coach is to keep track of contestants' scores during a match and notify a Quiz Master when a contestant has reached their limit.
6. Quiz Masters will ensure that coaches are present before starting a match.
7. Quiz Masters will also be positioned to see the audience.
8. Alternates may be used whenever a Coach would like, but a contestant must be replaced for the remainder of a match if they answer 5 questions correctly, also known as quizzing out. Coaches, please do not take advantage of using your alternates freely.
9. Alternates may only be used after a point has been given. No changing of contestants will be allowed during a question.
10. Contestants answering list questions must give the entire list.
11. No talking is permitted between contestants from the time the quizmaster starts a question until the points have been awarded unless a team is collaborating because the other team answered incorrectly.
12. A team may only collaborate when the other team answers a question incorrectly.
13. The first contestant to push the buzzer once the Quiz Master has started reading the question will have a chance to answer.
14. If the contestant pushes the buzzer before the Quiz Master is finished reading the question, he must finish the question to the Quiz Master's satisfaction and answer correctly to receive a point. Contestants must start finishing the question within 15 seconds of buzzing in.

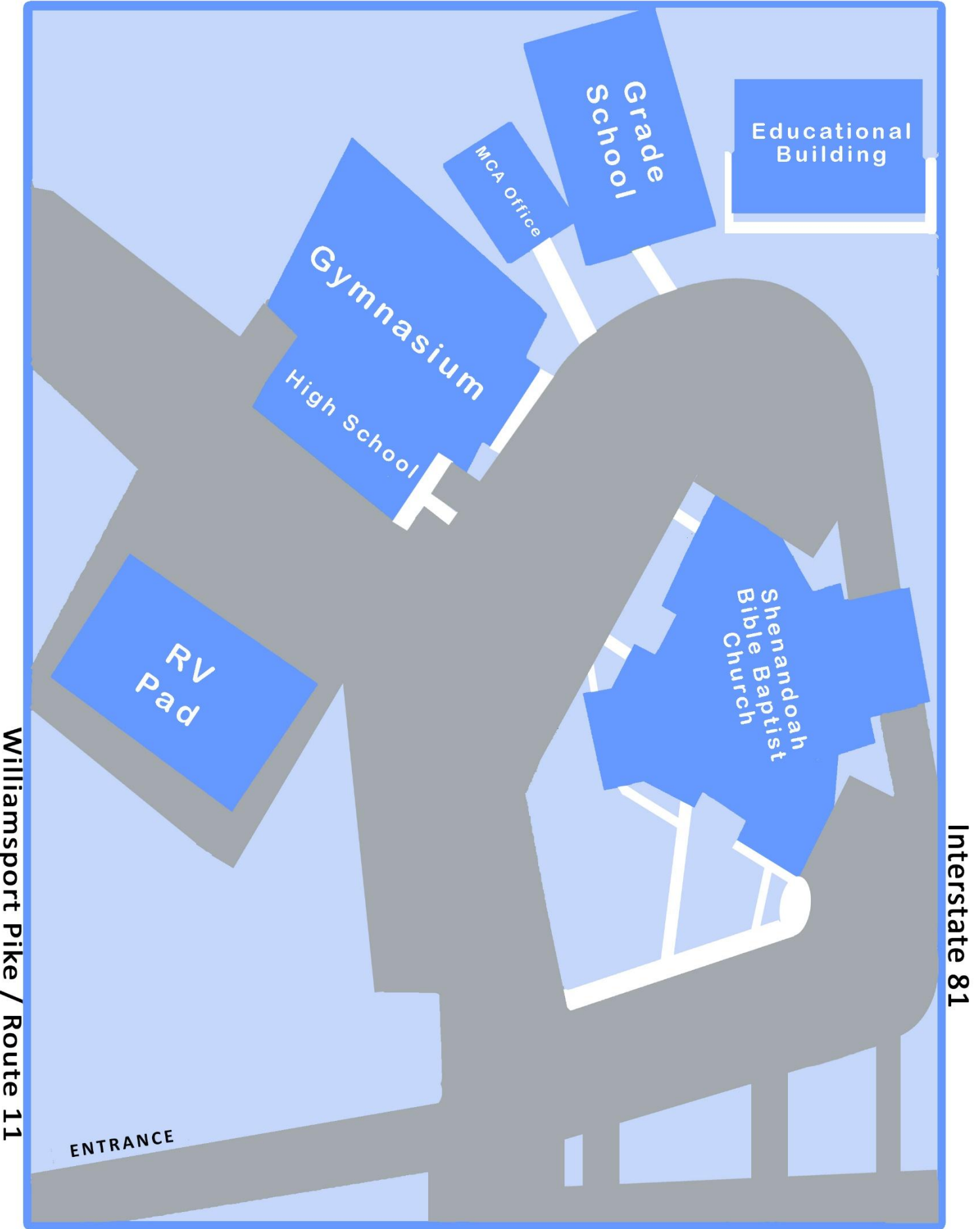
15. If the first contestant who pushes the buzzer answers incorrectly, the other team will have a chance to collaborate between the 4 contestants at the table for 30 seconds, then one contestant on the collaborating team will give an answer. If the answer is correct, the collaborating team receives the point. If the collaborating team gets the answer wrong the question is thrown out. The Quiz Master will repeat the question before the timer starts for the collaborating team.
16. After buzzing in, contestants have 15 seconds to start answering the question. If 15 seconds pass the question goes to the other team.
17. A student in a lower grade (7-9) may compete with the older grade (10-12). A student in a higher-grade bracket may not compete in a lower bracket. A younger student that is bumped up to a higher-grade bracket may not participate in the lower grade's bracket as well.
18. "Finish the verse" questions must be answered word perfect.
19. Quizzers may NOT answer a question by quoting the verse (only during "finish the verse" or "quote the verse" questions may the quizzers quote the verse in its entirety.)
20. The question, the answer, or even the decision by the quizmaster may be contested by any of the four quizzers on any team in the match or their coach, but it should be made immediately after the question has been asked, the answer given, or the decision made that draws a question. Contesting a question does not charge a team with a time out.
21. The Quiz Master and assistant will collaborate to decide on the contest.
22. Any form of cheating will be dealt with very seriously by the Bible Quizzing staff, up to disqualification of the entire team.
23. Audience members who appear to be communicating with the Bible Quizzing team will be asked to leave the match.
24. Christian conduct is expected by each quizzers, coach, and cheering section. Any misconduct (i.e., booing, jeering, etc.) by any quizzers, coach, or cheering section will be given one team foul. Two team fouls will constitute disqualification of the team from the remainder of the quiz.

### **C. Coaches Rules**

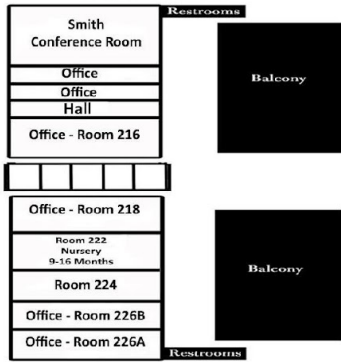
1. Coaches may call time out for 1 minute.
2. Coaches may use alternates as needed; however, they must replace a player who has quizzed out (Answered 5 questions correctly).
3. Only coaches may converse with the quizzers during the time out.
4. No Bibles, phone or paper is allowed on the platform by quizzers or coaches during time out.
5. Coaches and teams must abide by these rules or risk disqualification.
6. Coaches may not act as Quiz Master.
7. All three divisions will be competing simultaneously in different rooms. This cause each team to need an individual coach during the competition.

The quizzing passage for all ABCS Bible Quiz Teams 2024 is:

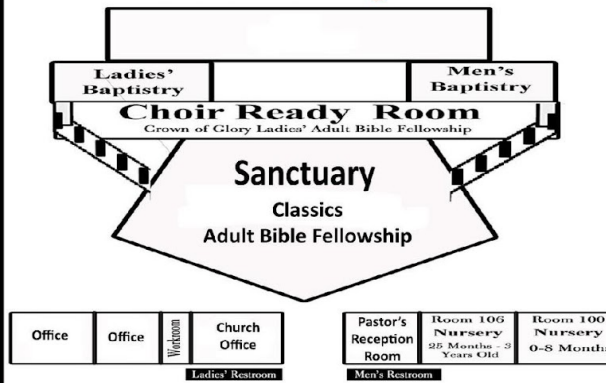
- 10<sup>th</sup> – 12<sup>th</sup> = 1 Peter 1-5
- 7<sup>th</sup> - 9<sup>th</sup> = Nehemiah 1-6
- 4<sup>th</sup> - 6<sup>th</sup> = Genesis 1-4



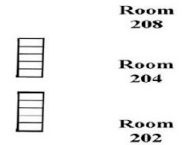
## 2nd Floor



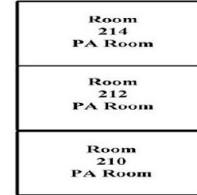
## Main Church Building - First Floor



## 2nd 1/2 Floor

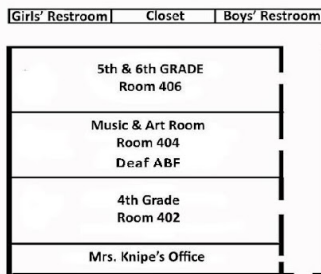


## 3rd Floor

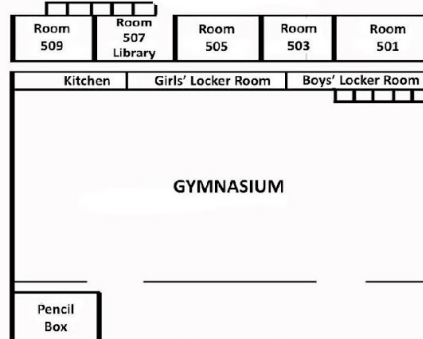


## Martinsburg Christian Academy Facilities

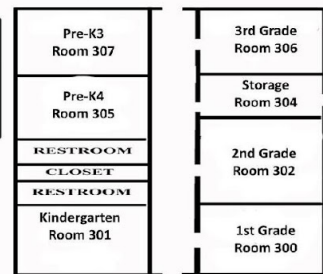
### Intermediate School Building



### ABOVE GYM

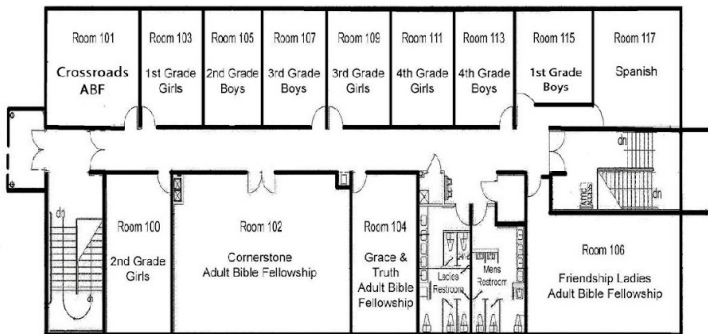


### Elementary Building

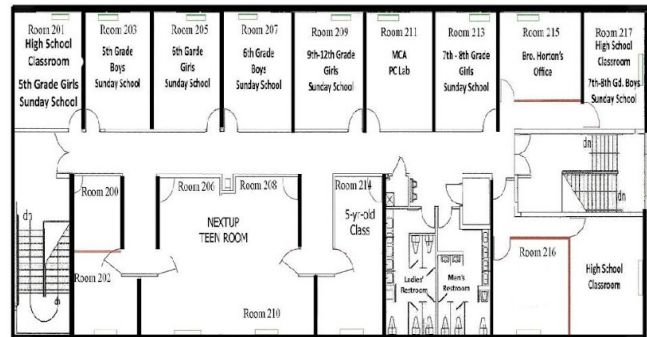


## Educational Building

### 1st Floor



### 2nd Floor



### Basement

